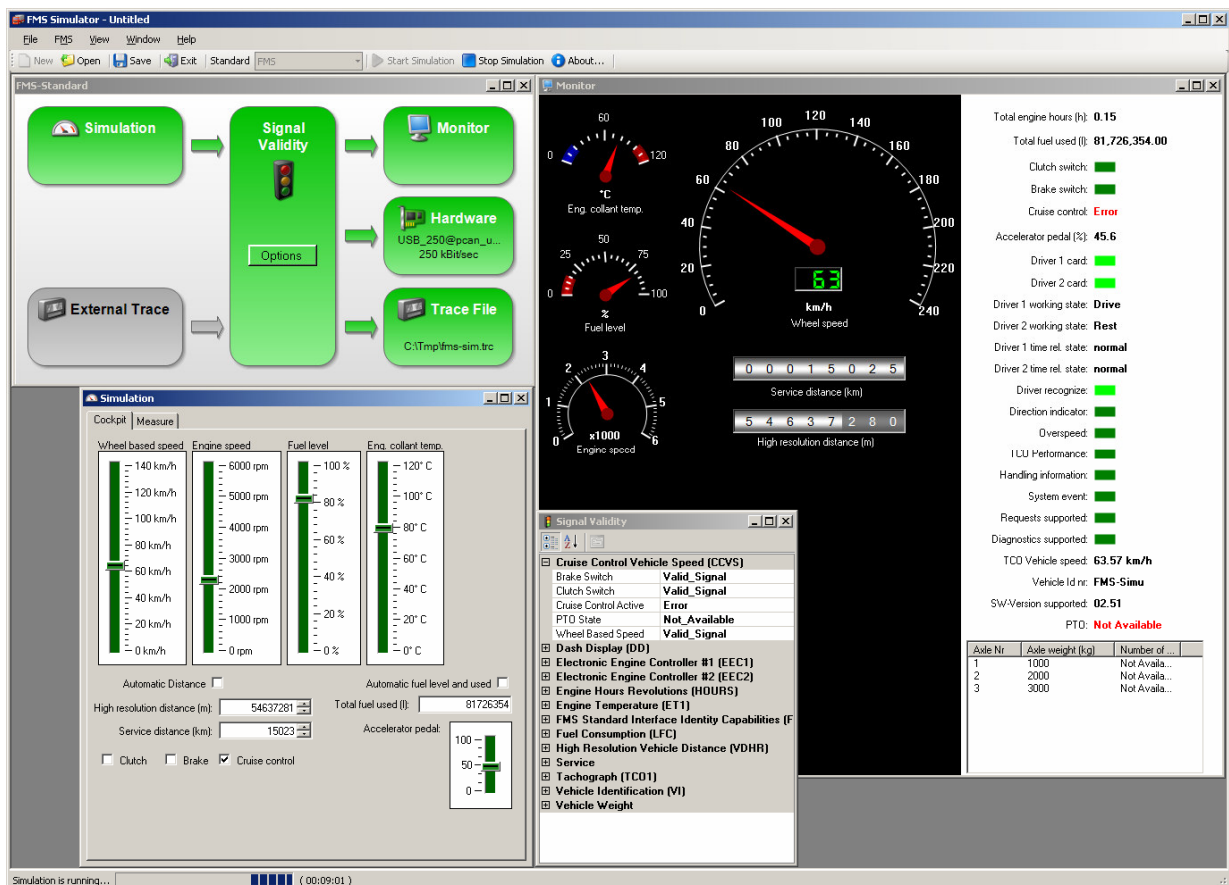


# CANgine

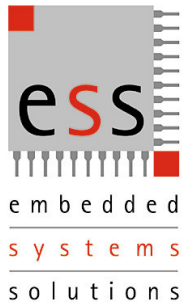
## FMS-Sim-SW

### Product Brief

CANgine FMS Simulator Software is an easy to operate yet very powerful tool. The software was created by Peak System Technik in close collaboration with ESS. Peak is one of the leading experts for CAN tooling. With CANgine FMS-Sim-SW you have all FMS variants in one single tool. You can switch between Truck and Bus FMS protocol and do not need to purchase and install two separate tools. The FMS experience gained for years by ESS is found in this unique software.



The best tool to test your telematics equipment against failures in transmission of vehicle data on its way to the telematics server.



# CANgine

## FMS-Sim-SW

### Features

- Supports Truck FMS and Bus FMS protocol
- Control of all FMS defined bus variables
- Suppress single FMS frames
- Allows generation of 'out of range', 'error' and 'not available' values for every single FMS variable
- Message priority and source address adjustable
- Output selectable to hardware, monitor and trace file
- Trace files (even recorded in the truck or bus) can be used as input
- Works with every Peak CAN hardware

### System Requirements

- Windows XP / Vista (32 bit versions)
- Microsoft .NET Framework 2.0 (installed automatically if required)
- Min. 256 MB RAM
- Min. 700 MHz CPU
- Any Peak CAN hardware (to access CAN/FMS physically)

For more information about the whole CANgine product family see [www.CANgine.com](http://www.CANgine.com)

ESS Embedded Systems Solutions  
 Industriestr. 15  
 D-76829 Landau  
 Phone: (49) 6341/3487-0  
 Fax : (49) 6341/3487-29  
[www.ESSolutions.de](http://www.ESSolutions.de)

Total engine hours (h): **0.25**  
 Total fuel used (l): **81.726.354.00**  
 Clutch switch:   
 Brake switch:   
 Cruise control: **Error**  
 Accelerator pedal (%): **45.6**  
 Driver 1 card:   
 Driver 2 card:   
 Driver 1 working state: **Drive**  
 Driver 2 working state: **Rest**  
 Driver 1 time rel. state: **normal**  
 Driver 2 time rel. state: **normal**  
 Driver recognize:   
 Direction indicator:   
 Overspeed:   
 TCO Performance:   
 Handling information:   
 System event:   
 Requests supported:   
 Diagnostics supported:   
 TCO Vehicle speed: **63.57 km/h**  
 Vehicle Id nr: **FMS-Simu**  
 SW-Version supported: **02.51**  
 PTO: **Not Available**

Axle Nr	Axle weight (kg)	Number of ...
1	1000	Not Availa...
2	2000	Not Availa...
3	3000	Not Availa...